



TriCaster® Mini

Quick Start Guide



Congratulations... we're so excited!

With your new TriCaster® Mini, your stories are going to be **BIGGER, BRIGHTER, BETTER, and BOLDER** than ever.

Check it out... here's what's in the box:



TriCaster® Mini



2 Spark Plus™ I/O 4K,
and Network Cables



4 Mini DisplayPort
Adaptors



Power
Supply



Keyboard

Mouse



Cable
Management Clamp



Removable
Power Cable

Connections Set Up | Back Panel

1. Power Connector

- Connect the removable power cord to the power supply
- Connect the power supply cable to the power connector on the unit
- Plug in the removable power cable to an electrical power source

2. Mini DisplayPort Connectors

- Connect mini DisplayPort adaptors to unit
- Connect adaptors to monitors or displays using HDMI or DisplayPort cables

3. USB 3 Connectors

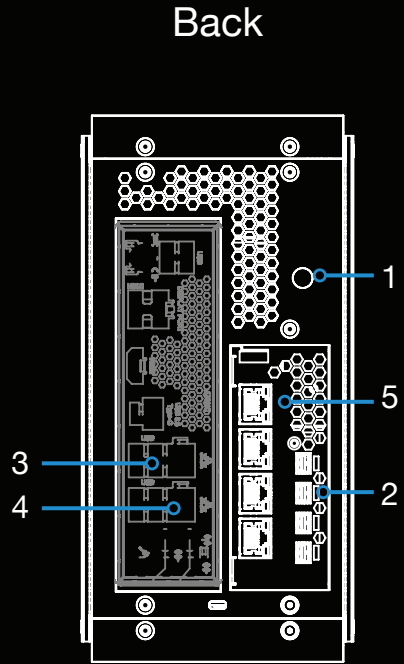
- Connect keyboard and mouse
- Pro Tip: If USB extenders are needed for peripheral devices, performance can vary and it is recommended to contact an authorized Newtek supplier for advice.

4. Gigabit Ethernet Network Connectors

- Connect to network for more input sources, outputs, and internet access

5. NDI® Source Connectors

- Connect network cables to NDI® connector (6) on the Spark Plus™ I/O 4K



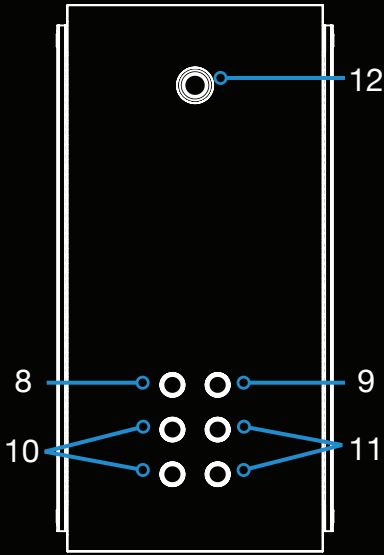
Back

Spark Plus



Connections Set Up | Front Panel

Front



6. NDI® Output Connector

- Connect network cable from the Spark Plus™ I/O 4K to NDI® Source Connector (5) on unit

7. HDMI Input Connector

- Connect HDMI cable from video source to the Spark Plus™ I/O 4K

8. Microphone Connector

- Connect microphone input

9. Headphone Connector

- Connect headphones for audio monitoring

10. Audio L-R In Connectors

- Connect line level audio source

11. Audio L-R Out Connectors

- Connect line level audio output

12. Power Switch

- Press to turn on power to the unit

s™ I/O 4K



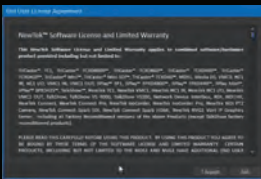
We really want to see what you're up to... share your videos, pictures (preferably with your shades on) and cool stories on our Facebook page, Instagram, LinkedIn, Twitter, or whatever social media site you hangout on. There's a NewTek account wherever you go.

Registration

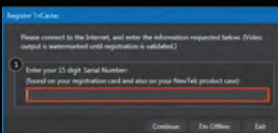
1. Find the 15 character serial number label on the TriCaster® Mini unit



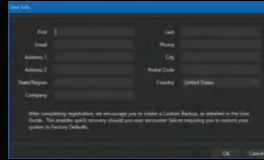
2. Use one of the [Gigabit Ethernet Network Connectors](#) on the unit to make an active internet connection
3. Be sure a display, keyboard and mouse are connected to the unit
4. Press the Power Switch on the unit
5. Once the unit finishes powering up, the End User License Agreement appears. Review the agreement, then click "I Accept" to continue



6. The Register TriCaster® screen now appears. Type in the 15 character serial number and click "Continue"



7. The User Info screen now appears. Fill out the information and when complete, click OK



8. After confirmation with the NewTek registration service, the system user interface appears. Before using the system, please go to <https://www.newtek.com/downloads/> to download and install the latest version of software.
9. Clicking on the New Session box is the first step to creating your show. Yay!

Before you go...

If you would like a bit of help to get started, check out the downloadable video tutorials that show the most common features you use to make your show. It's all right here <https://new.tk/tcmQSGV>

One Last Cool Thing to Do Before You Start!



Download the FREE iOS camera app. Once you've installed the app on your phone, you have a 4K camera right in your pocket. Get it here <http://new.tk/TCNDIHXCAM>